

ALUMINUM TERMINAL PLUGS

Aluminum Terminal Plugs

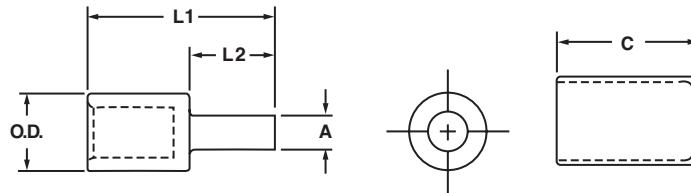
Type TP

For terminating copper or aluminum wire

- Manufactured from high-strength aluminum alloy, tin-plated and filled with oxide inhibitor for a cool running compression connection
- Optimum design to permit use of stranded copper or aluminum conductors in equipment such as panel boards, meter sockets and mechanical connectors contained in molded case circuit breakers
- Solid plug has same diameter as current carrying equivalent copper wire permitting the use of larger aluminum wire to connect equipment
- Connector is marked with catalog number, die index, color code and required number of crimps
- Insulating covers are supplied with each connector and are rated 600 V



486A-486B
LISTED
AL9CU



CATALOG NUMBER	COPPER & ALUMINUM CONDUCTOR SIZE	EQUIVALENT PIN SIZE	APPROXIMATE DIMENSIONS (IN.)					CRIMPING TOOL REFERENCE		
			A	O.D.	L1	L2	C	DIE COLOR CODE	PENN-UNION DIE CATALOG NO.	BURNDY DIE INDEX NO.
TP-6	6 Str.	#4 AWG	.23	.60	1.85	.68	1.75	Tan	T-296	296
TP-4	4 Str.	#4 AWG	.23	.60	1.85	.68	1.75			
TP-2	2 Str.	#4 AWG	.23	.60	1.85	.68	1.75			
TP-1	1 Str.	#3 AWG	.26	.60	2.01	.84	1.75			
TP-1/0	1/0 Str.	#2 AWG	.29	.60	2.01	.84	1.75	White	T-298	298
TP-2/0	2/0 Str.	#1 AWG	.33	.85	2.21	.84	2.25			
TP-3/0	3/0 Str.	1/0 AWG	.37	.85	2.59	1.22	2.25			
TP-4/0	4/0 Str.	2/0 AWG	.42	.85	2.59	1.22	2.25			
TP-250	250 kcmil	3/0 AWG	.47	1.10	2.63	1.22	2.50	Brown	T-299	299
TP-300	300 kcmil	4/0 AWG	.53	1.10	2.75	1.34	2.50			
TP-350	350 kcmil	250 kcmil	.57	1.10	2.75	1.34	2.50	Pink	T-300	300
TP-400	400 kcmil	300 kcmil	.63	1.31	3.08	1.60	2.87			
TP-500	500 kcmil	350 kcmil	.68	1.31	3.08	1.60	2.87	Yellow	-	936
TP-600	600 kcmil	400 kcmil	.73	1.46	3.67	1.64	3.75			
TP-750	750 kcmil	500 kcmil	.81	1.46	3.79	1.76	3.75			